



5504 CHEVY CHASE PARKWAY NW

TABLE OF CONTENT

OVERVIEW	4
EXTERIOR	6
INTERIOR	8
KITCHEN	12

OVERVIEW

The house, designed by Van Dusen Architects of Washington DC, is a large expansion of a house built in the early part of the last century. The design beautifully incorporates the classical form and detailing of the small original house with a very large more modernized addition.

The house has approximately 6500 square feet on four floors with seven bedrooms and seven full bathrooms. It has a screened side porch, rear deck and patio, and a large one car garage with ample storage room. The exterior utilizes a combination of materials such as cedar shingles, vertical siding, and metal roofs to accentuate the multi-textural architectural forms and surfaces of the house. Other Amenities Include:

- 3.5 inch red oak floors on two levels and wall to wall carpet on two levels

- Locally built painted kitchen cabinets and bathroom vanities
- Porcelanosa tile in all the bathrooms and kitchen back splash
- An original wood burning fireplace and a new gas fireplace
- Built in shelving on the main level
- Grohe, Toto, and Kohler bathroom fixtures
- LED lighting including over one hundred recessed and dimmable fixtures
- Four zone heating and air conditioning, each floor individually thermostatically controlled with Wi-Fi capabilities
- High efficiency Goodman furnaces, air conditioning condensers, and hot water heater
- Sound insulation in all bathrooms and master bedroom
- Pre-wire in each room for Wi-Fi, television, data access and phone
- Media room and family room pre wired for surround sound
- Thermador kitchen appliance set with six burner cook top,

microwave drawer and 48 inch refrigerator/freezer

- Caesar Stone kitchen counters and vanity tops
- Stone patio and walkways
- Complete spray foam insulation with REM design that exceeds building codes
- Recirculating hot water system for instant hot water on all floor levels
- Combination of architectural shingles and metal roofs
- New one inch copper water service
- Pervious driveway paving
- Custom made exterior metal deck railings
- Overhead fan capabilities in all the bedrooms and 3rd level common area
- All windows and exterior doors are high efficiency with Low-E 366 annealed glass
- New underground four hundred ampere electrical service and new underground telephone and cable
- Ample storage areas throughout the house
- The property will accommodate a pool in the rear yard



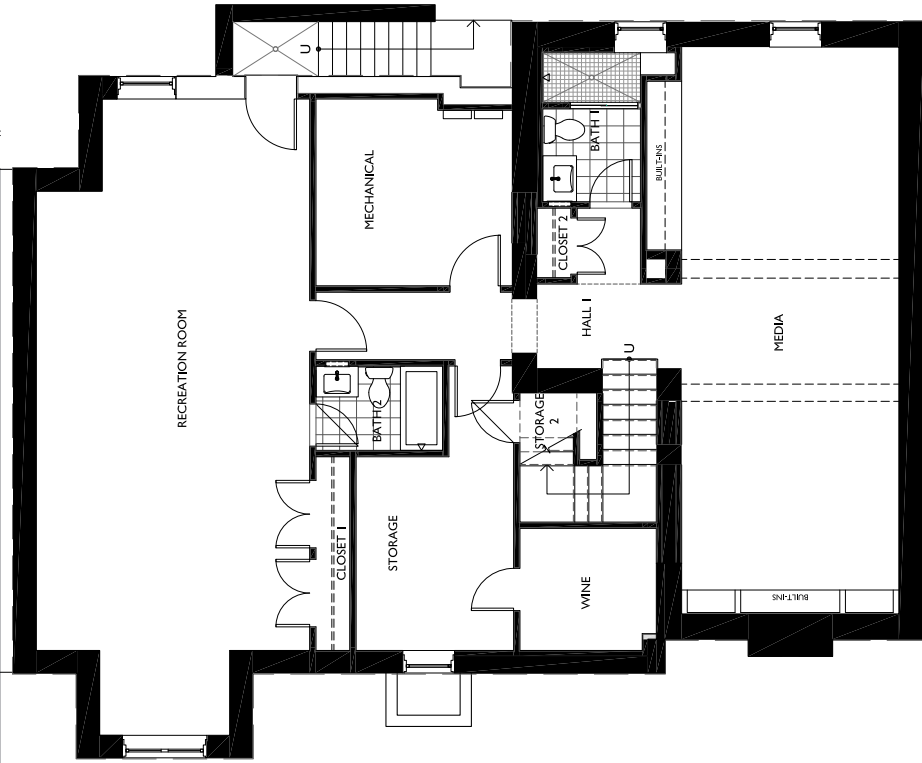
EXTERIOR



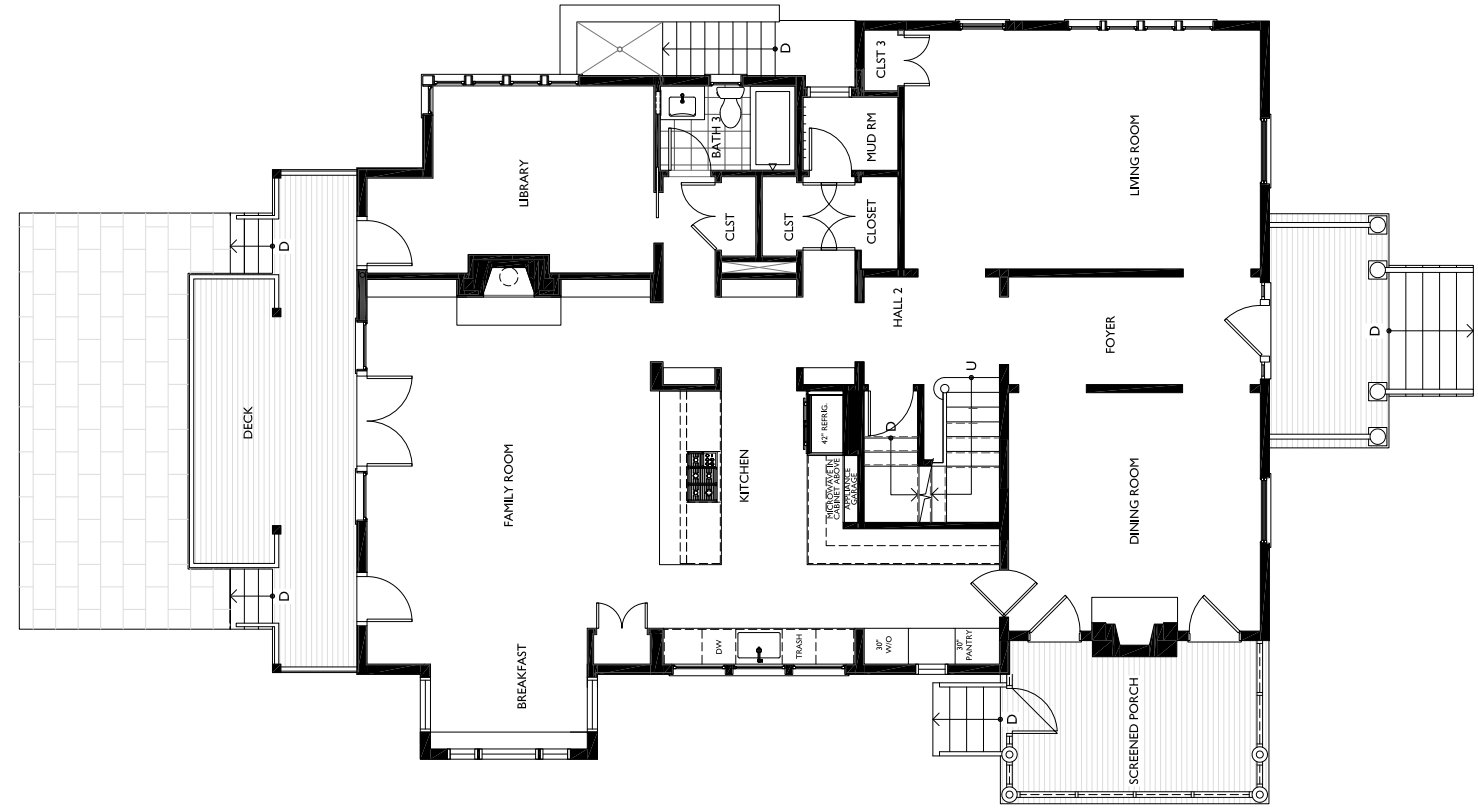
INTERIOR

Basement
2 BA
total sq ft: 1631

Main Floor:
1 BA
total sq ft: 1905



BASEMENT



MAIN FLOOR

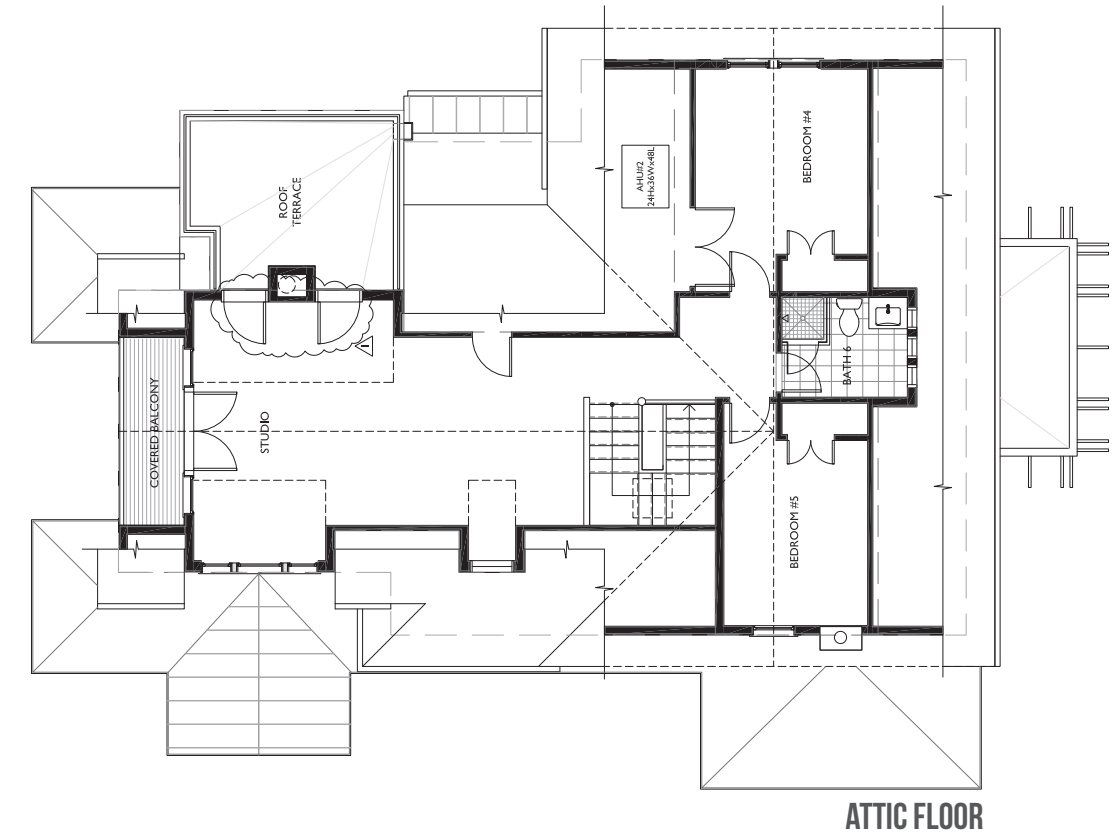
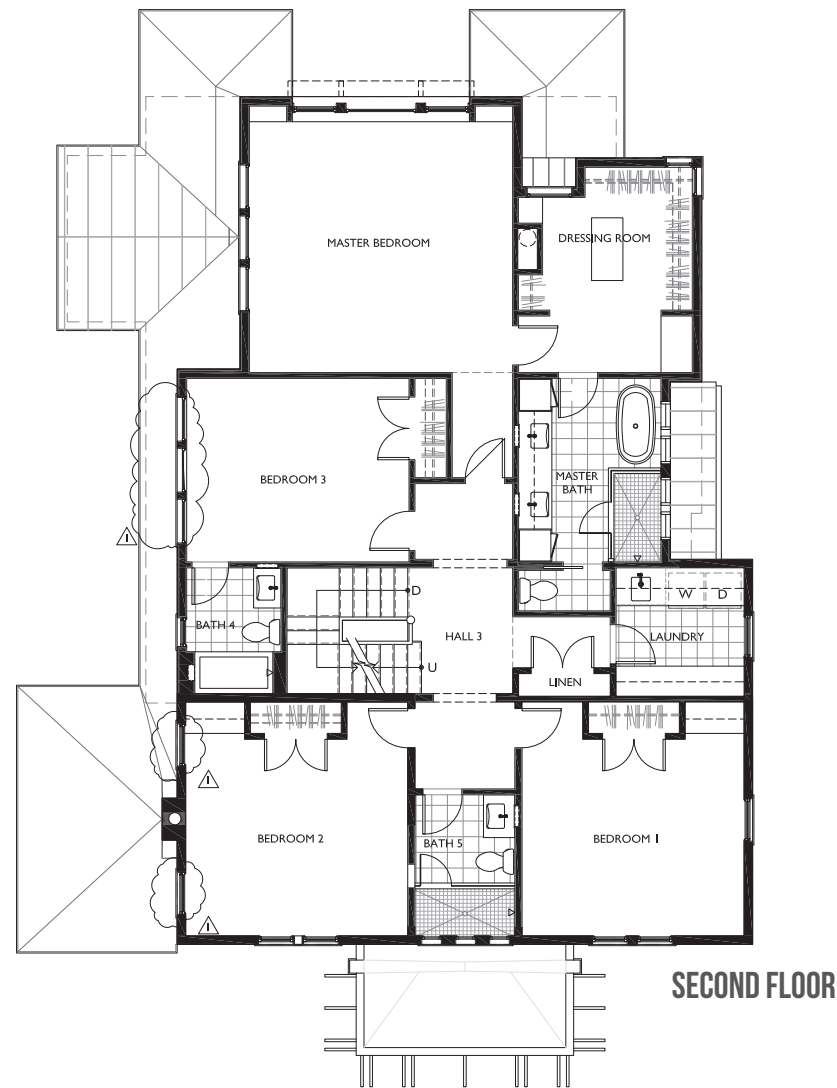
INTERIOR

Second Floor
4 BR/ 3 BA
total sq ft: 1545

Master: 16ft 9in x 16ft
BR 1: 14 ft 2 in x 15 ft
BR 2: 14 ft 2in x 12 ft 6 in
BR 3: 11' 8 in x 14 ft 2 in

Attic Floor
2 BR/ 1 BA
total sq ft: 876

BR 4: 11 ft 5 in x 14 ft 2 in
BR 5: 9 ft 2in x 11 ft 10 in



KITCHEN

TILES OVER
FIREPLACE

WHITE PAINTED
BOOKSHELVES

DARK TONED 3.5"
OAK FLOORS



VIEW OF FAMILY ROOM & KITCHEN

KITCHEN



KITCHEN

24" THERMADOR STAINLESS
STEEL BUILT-IN FRESH
FOOD COLUMN

18" THERMADOR STAINLESS
STEEL FREEZER COLUMN
WITH EXTERNAL ICE &
WATER DISPENSER

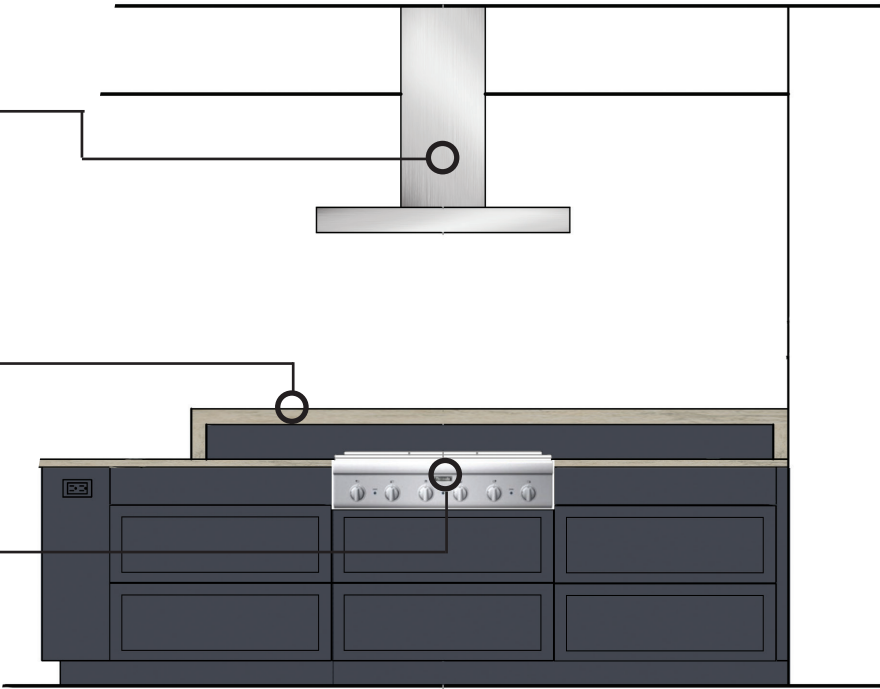
24" SHARP STAINLESS STEEL
MICROWAVE DRAWER OVEN



42" LOW PROFILE
STAINLESS STEEL ISLAND
CHIMNEY HOOD

CAESER STONE ISLAND BAR

36" THERMADOR
PROFESSIONAL SERIES
RANGETOP

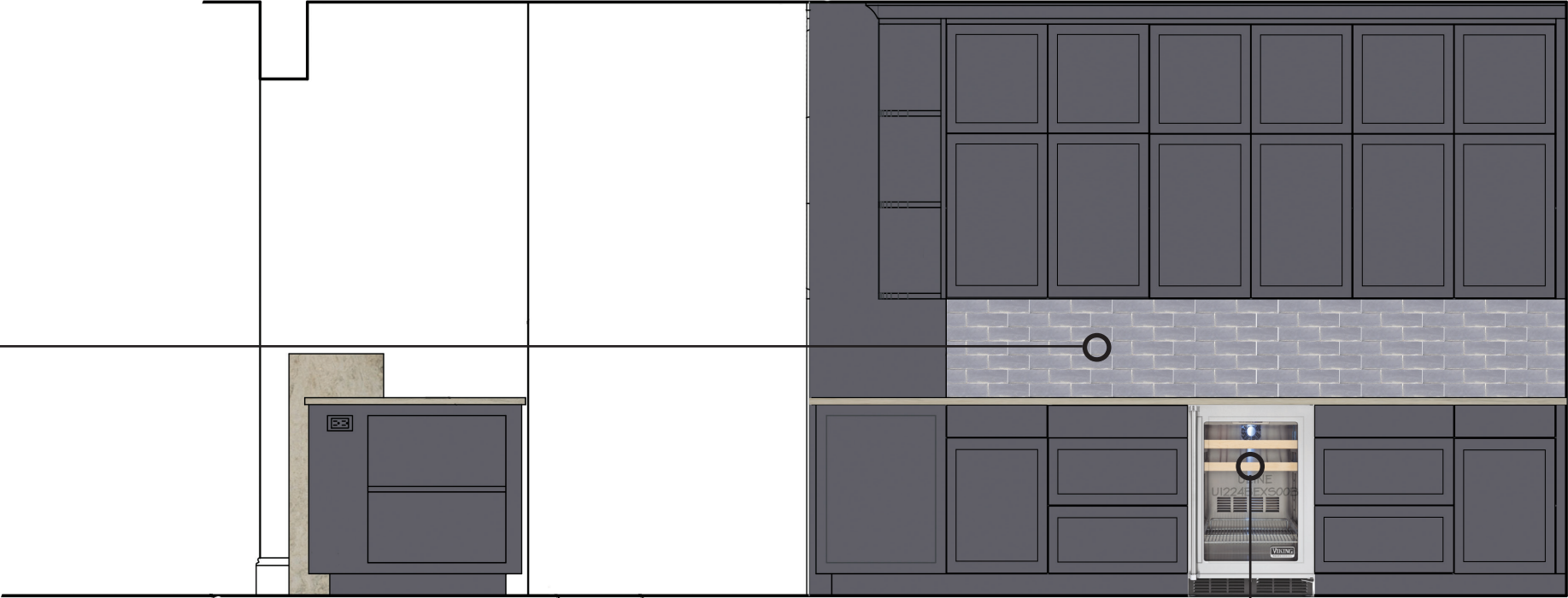


KITCHEN

RAISED COUNTERTOP BAR

TILE BACKSPLASH

24" U-TILE STAINLESS
STEEL BEVERAGE CENTER



LUSTIG ASSOCIATES

202.333.5155

peter@lustigassociates.com

www.lustigassociates.com